



PRAMMINDO
RUBBER ROLLS INDUSTRY

PT. PRAMMINDO RUBBER INDUSTRY
SPECIALIST MANUFACTURER | RUBBER ROLLS RECOVERING

Rubber Roller Covering Technology

PRAMMINDO develops and produces high quality roller compounds for all applications, including the printing, plastic, cartoon box, paper, textile, plywood, foil, and steel industries in all the required forms; calendered sheet, profile, or batch.



Roll Covering

The Properties of Rubber Rollers we make come in the following range;

- **HARDNESS**

10 Shore A to 100 Shore A
30 Shore D to 90 Shore D

- **SURFACE ROUGHNESS**

11 - 16 Micron

- **GRINDING CAPACITY**

Diameter 50mm - 2,950mm
Length 500mm - 13,500mm



Sleeve Roll

RAW Material Milable Prammino Rubber

- **SILICON**

High Temperature and Release
Resistance (Antistatic)

Type : SL 250° C
SM 400° C
SH 850° C

- **CHLOROPRENE**

Ozone, UV, Oil Resistance

- **NBR**

Solvent, and Ink Resistance
Temp. 125° C

- **IIR Butyl**

Abrasion, Ozone R

- **MICROROC, BLACK DIAMOND
STONITE RUBBER**

High Pressure and High Hardness
Abrasion Resistance

- **CSM, HIPALON**

Acid Resistance, H2SO4, Chemicals

- **EPDM**

Chemicals Resistance, Anti Flex Cracking
Temp. Max 160° C

- **UREPAN 388**

General Purpose, Solven, EA, MEK
Toluene, Chemicals, Temp. Max 160° C



Silicon



Microroc

- **NR, SBR**

Economy Price & Quality

- **Sponge Rubber**

Glue Resistance
Anti Slyp

- **IIR Butyl**

Abrasion, Ozone Resistance

- **GUSSO® Rotoprint / Rotopress**

High Quality Rubber Roll Printing Industry
Application

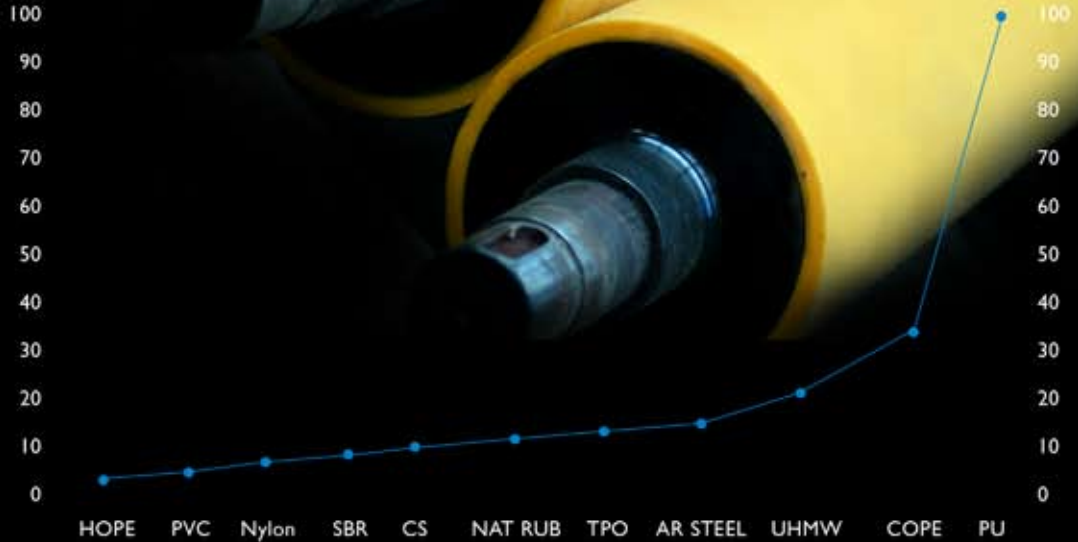
Polyurethane Casting Type

General Purpose, Abrasion resistance and High Tensile Strength. Max Temp. 100° C

Abrasion Resistance (Laboratory Data)

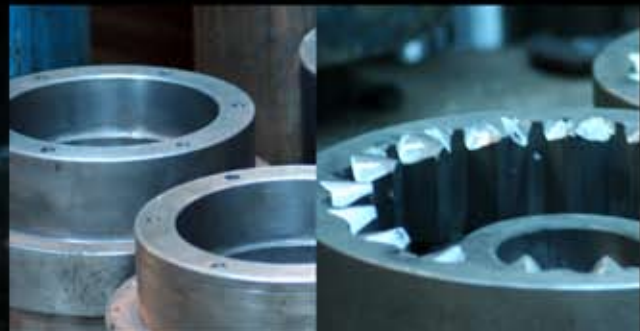


Injection Casting Works



Abbreviation: HDPE - High density polyethylene, PVC - Polynivyl chloride, SBR - Styrene Butadiene Rubber, CS - Carbon Steel, NAT RUB - Natural Rubber, TPO - Thermoplastic Olefin, AR STEEL - Hardened Steel, UHMW - Ultra high Molecular weight polymer, COPE - Copolyester/ether, PU - Polyurethane

Mechanical Engineering & Machine Parts Support



PT. Prammino Windu Karya Cemerlang
Head Office
 Villa Melati Mas SR 24 No. 8
 Serpong, Tangerang
 P +62 21 537 1329/95
 +62 21 537 1529/30
 F +62 21 537 1394
 M mail@prammino.co.id
 W www.prammino.co.id

Surabaya
 P +62 812 1050 324
 F +62 21 537 1394

Jateng
 P +62 295 4719 59
 F +62 295 4719 59

Factory 1
 Ds. Jelupang Km 5,7
 Serpong - Tangerang
 P +62 816 807 389

Factory 2
 Ds. Kudu Keras
 Kab Juwana - Jawa Tengah
 P +62 295 71959